
SHIFT HAPPENS: ADAPTING AN ASSESSMENT-DRIVEN PRACTICE MODEL THROUGHOUT A CONTINUUM OF CARE

BOULDER COUNTY IMPACT



Dave Bonaiuto, MA
Lane Volpe, PhD
Heather Lucien, LCSW
Angie Dreier, MSW

AGENDA

I. The Context

II. The Model

III. The Shift

IV. The Results

V. The Future

AGENDA

I. The Context

II. The Model

III. The Shift

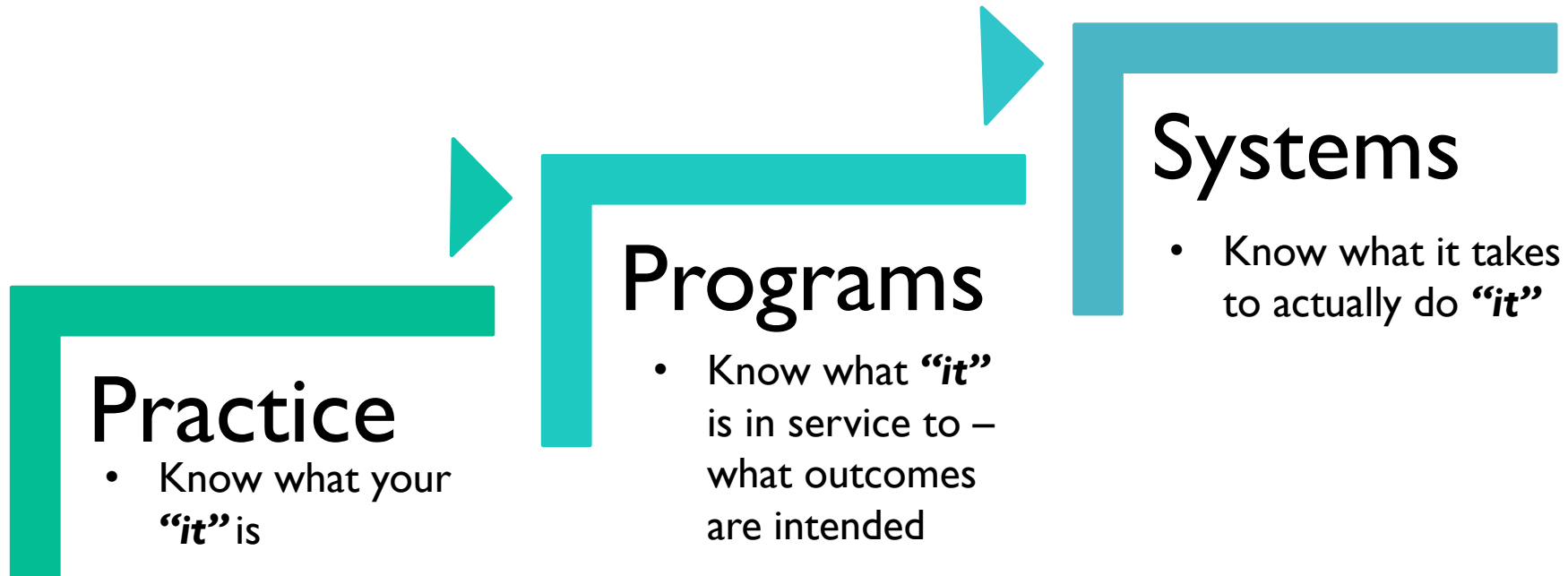
IV. The Results

V. The Future



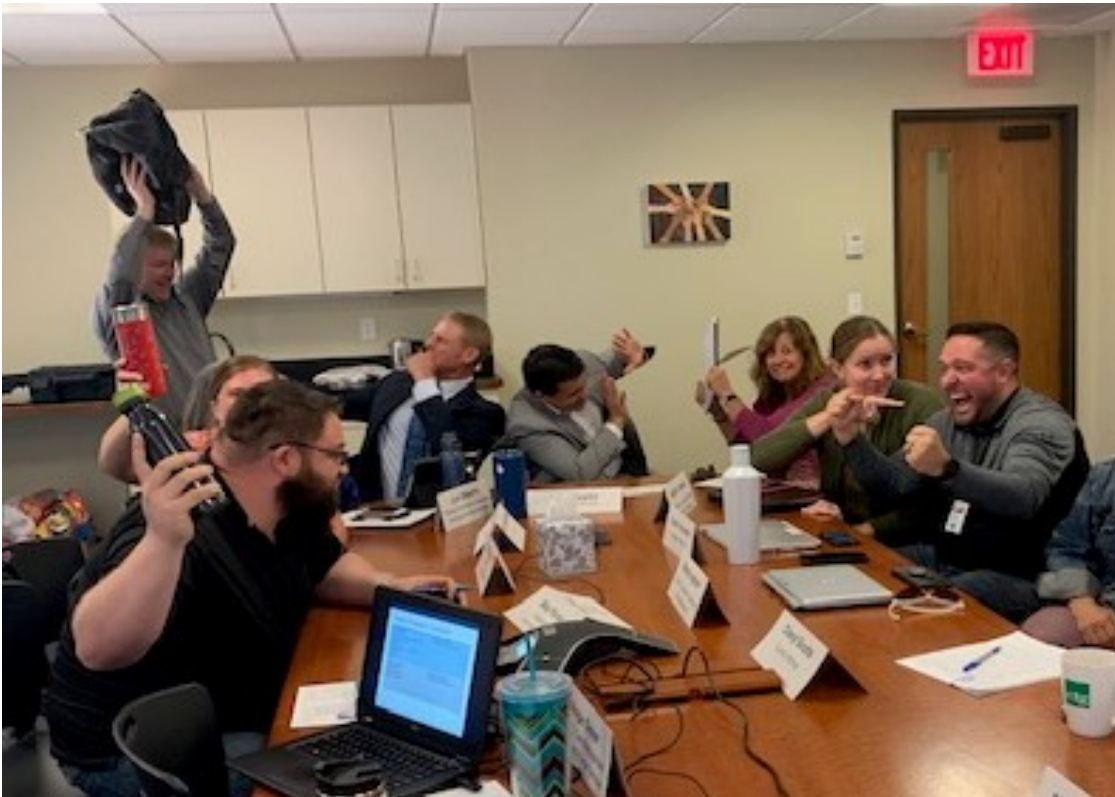
THE CONTEXT

TCOM: REPLICATION & ADAPTATION TO LINK PRACTICE, PROGRAMS AND SYSTEMS



COMMUNITY REVIEW TEAM

BEFORE (no one was physically harmed in the production of this photo...barely)



AFTER (not even kidding, they were actually humming kumbaya)



AGENDA

I. The Context

II. The Model

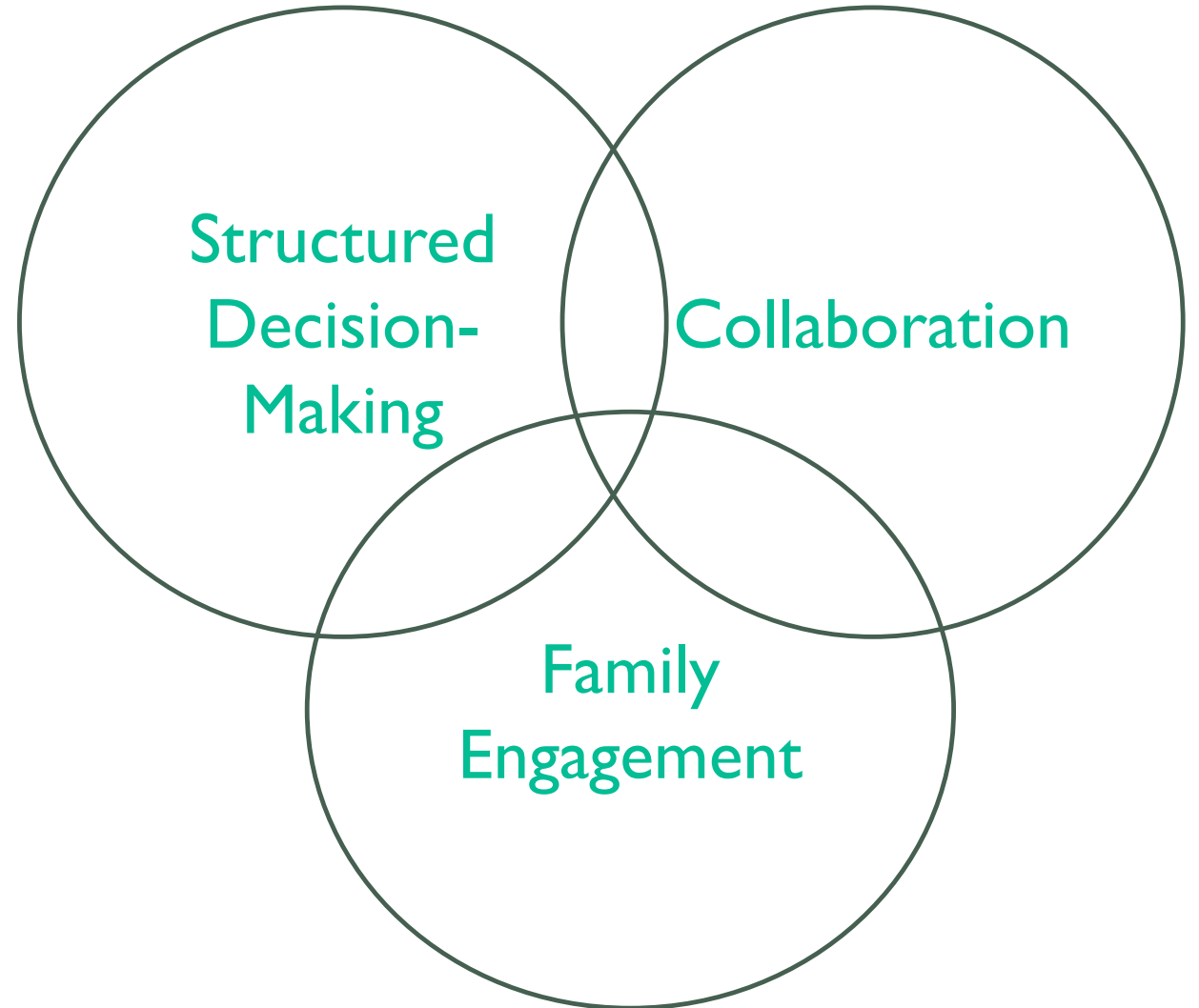
III. The Shift

IV. The Results

V. The Future

THREE CORE COMPONENTS

- Step 1: Define target population
- Step 2: Engage family with CANS
- Step 3: Schedule a meeting
- Step 4: Get (the right) people there
- Step 5: Facilitate the madness
- Step 6: Use a structured decision making process to mine for sanity, health & solutions
- Step 7: Have an appropriate service array or don't bother (think TCOM)
- Step 8: Monitor and track outcomes so you know what the heck happened
- Step 9: Reassess for progress over time
- Step 10: Dance a jig and celebrate
- Step 11: (optional) Present at TCOM conference



STRUCTURED DECISION MAKING PROCESS

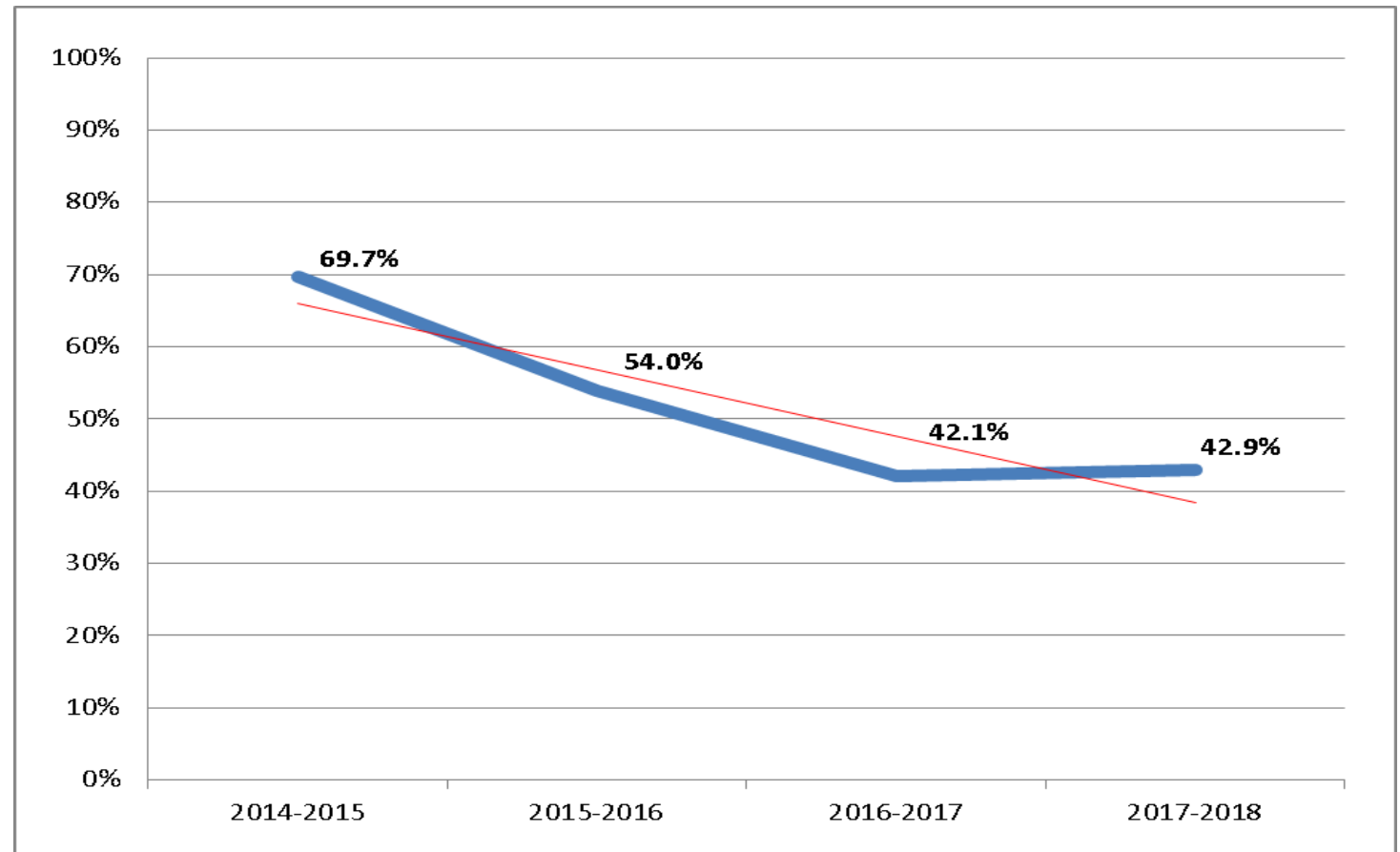
1. Review Child and Adolescent Needs and Strengths (CANS) assessment results
 - Level of need
 - Areas of youth and caregiver need
 - Areas of youth and caregiver strengths
2. Identify responsivity issues
3. Prioritize youth needs
4. Explore possible services and supports
5. Match services to the level and type of needs
6. Reassessment

CRT OUTCOMES

When we started using the CANS in 2015 – now

- **Detention, placement and commitment rates lowest in the state**
- **Number of low-risk youth involved in the justice system decreased by sixteen percentage points**
- **Average system length of stay reduced by almost 150 days**
- **Reduced number of repeat CRT meetings**

- CRT utilization decreased 33%
- Average number of CRTs per youth decreased 10%
- Estimated savings of 746 hours in staff time for 2017-18



AGENDA

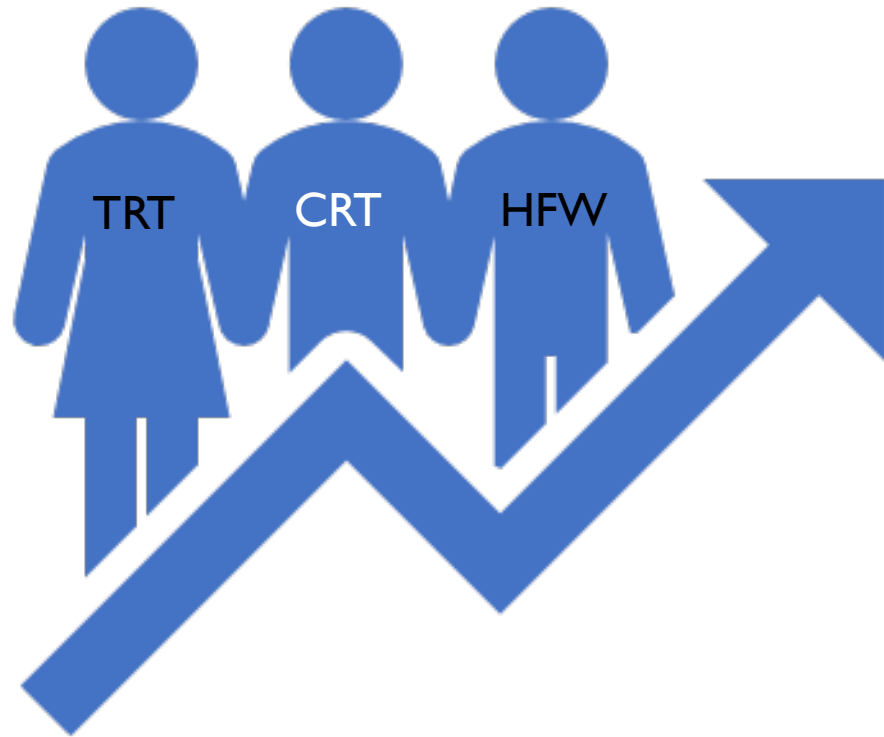
I. The Context

II. The Model

III. **The Shift**

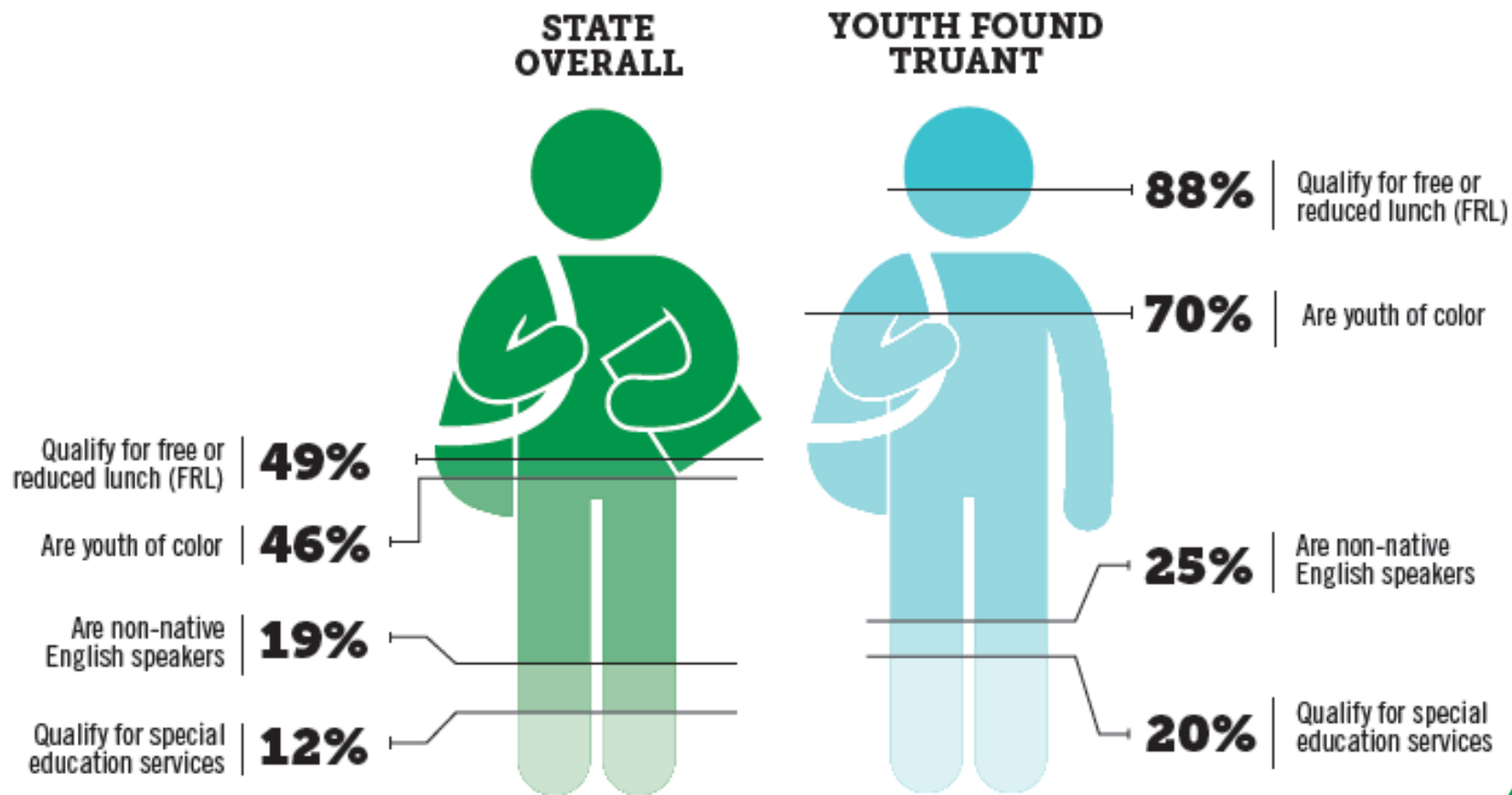
IV. The Results

V. The Future

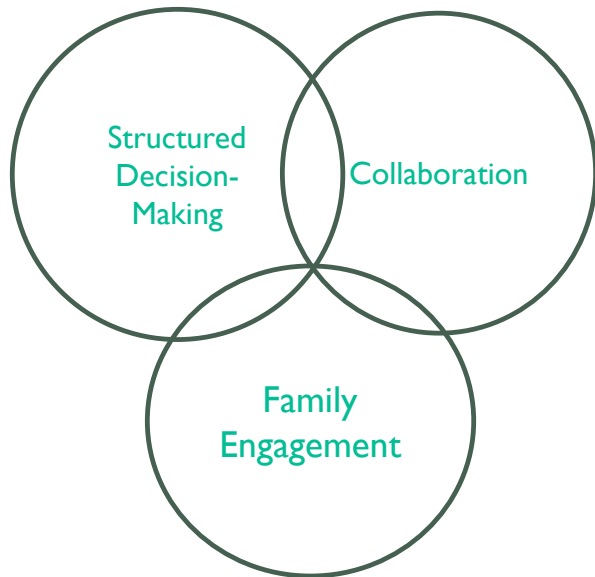


THE SHIFT

TRUANCY - THE PROBLEM



TRUANCY SHIFT: SAME MODEL, DIFFERENT APPLICATION

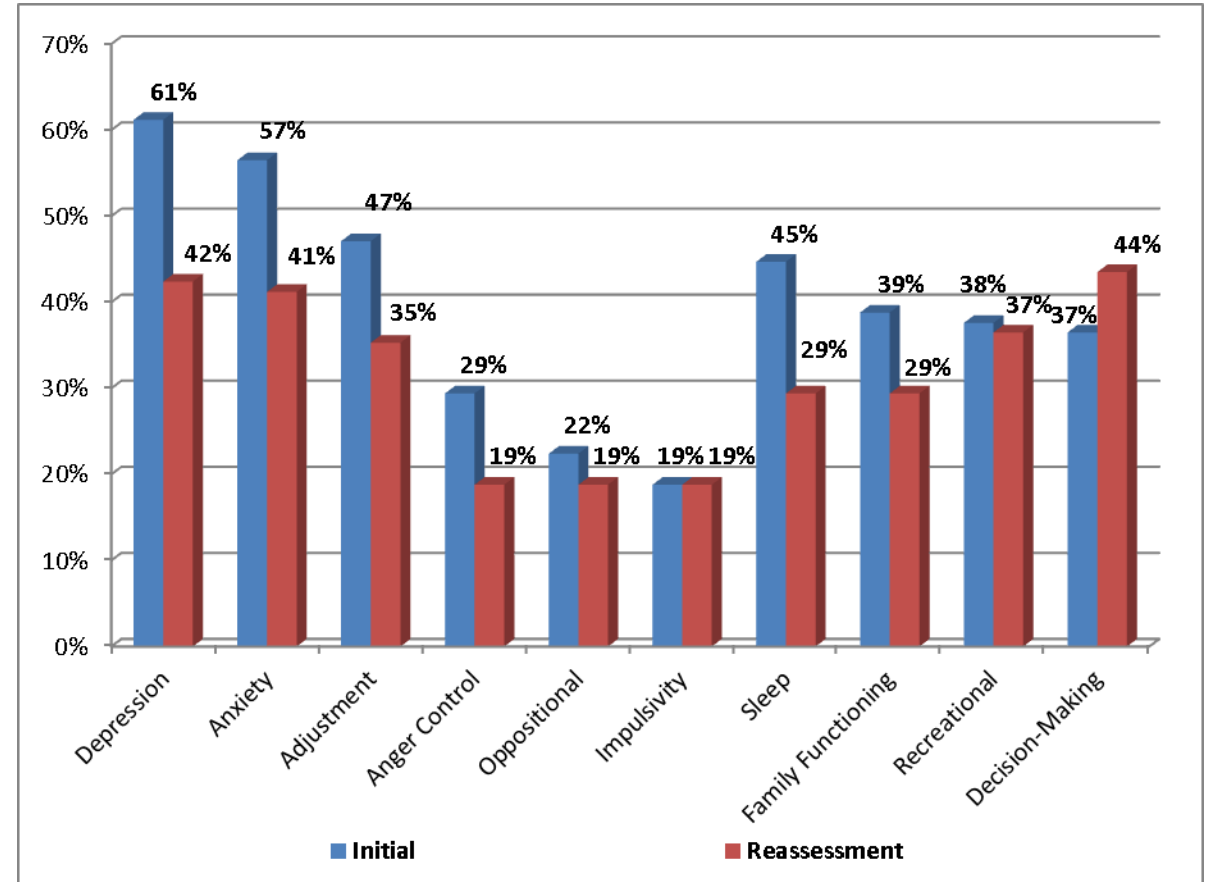
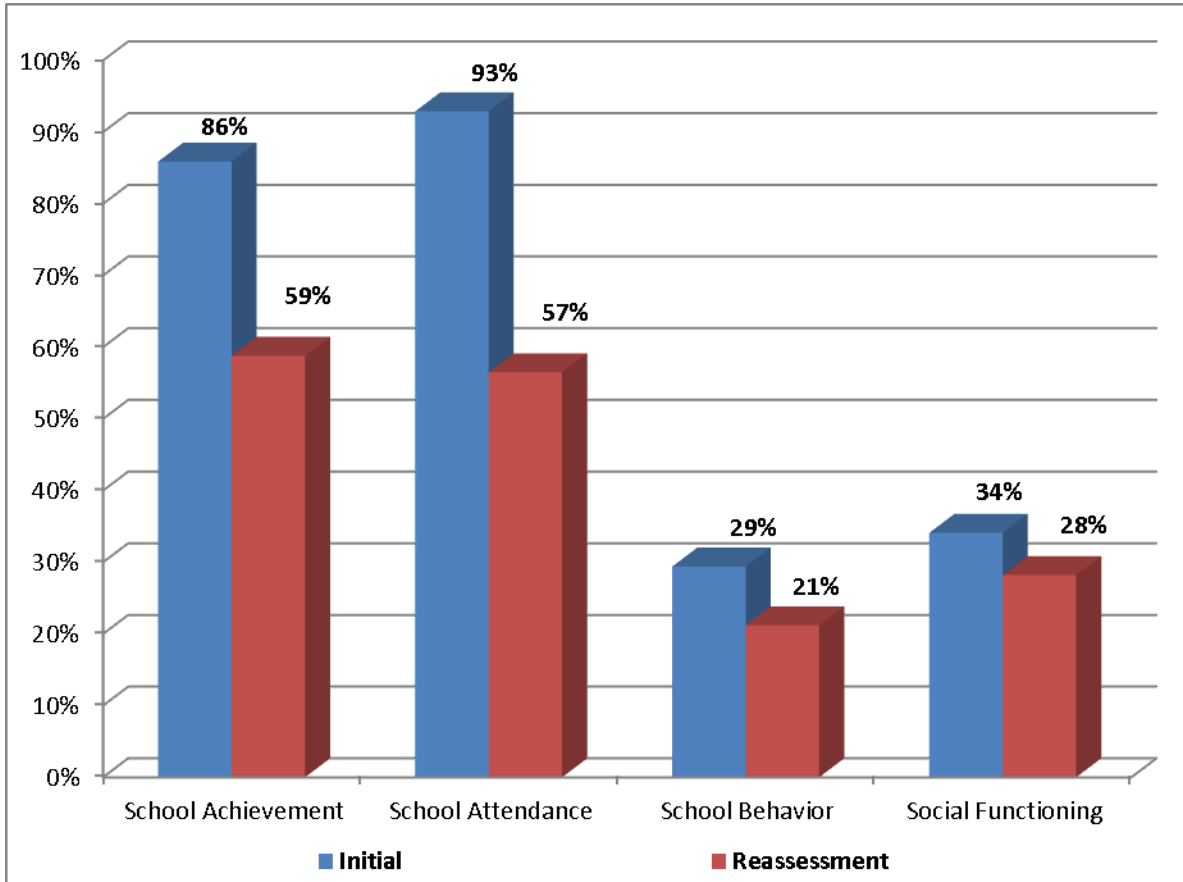


Essential Ingredients	Community Review Team	Truancy Review Team
Population	High Risk – Multi-system involved	Low Risk – Younger kids, Caregiver Focus
Focus	Family, Mental Health/Trauma & Legal	Education
Responsivity Issues	Involuntary, Motivation	Voluntary, Basic Needs
Service Array	Intensive	Community/School Based
Level of System Involvement	Intervention	Prevention/Early Intervention
Collaboration	Select staff, Multiple meetings weekly	Select Staff Every other week

AND THE CROWD GOES WILD! RESULTS.

TRUANCY IMPROVEMENT PROJECT: JUNE 2016-JULY 2019

Percentage Differences for Selected CANS Items (N=85)



WRAPAROUND: THE PROBLEM

POPULATION

Total Population: 28 Highest Risk Youth

Multi-system involved - 100%

Transition Aged Youth - 32%

At risk of congregate care placement - 54%

Legal Involvement - 54%

CANS NEEDS

68% Adjustment to Trauma

68% Supervision

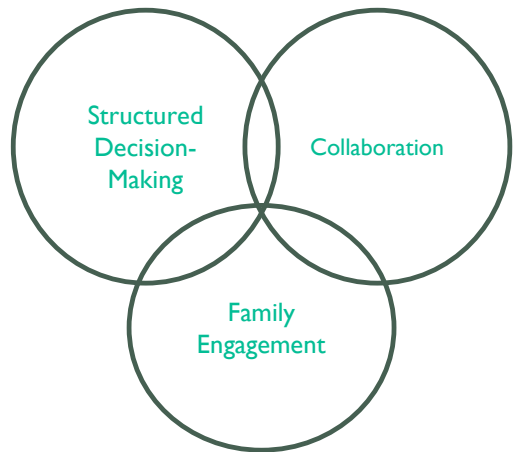
71% Family Functioning Needs

66% Decision-Making

23% Natural Supports



WRAPAROUND SHIFT: SAME MODEL, DIFFERENT APPLICATION



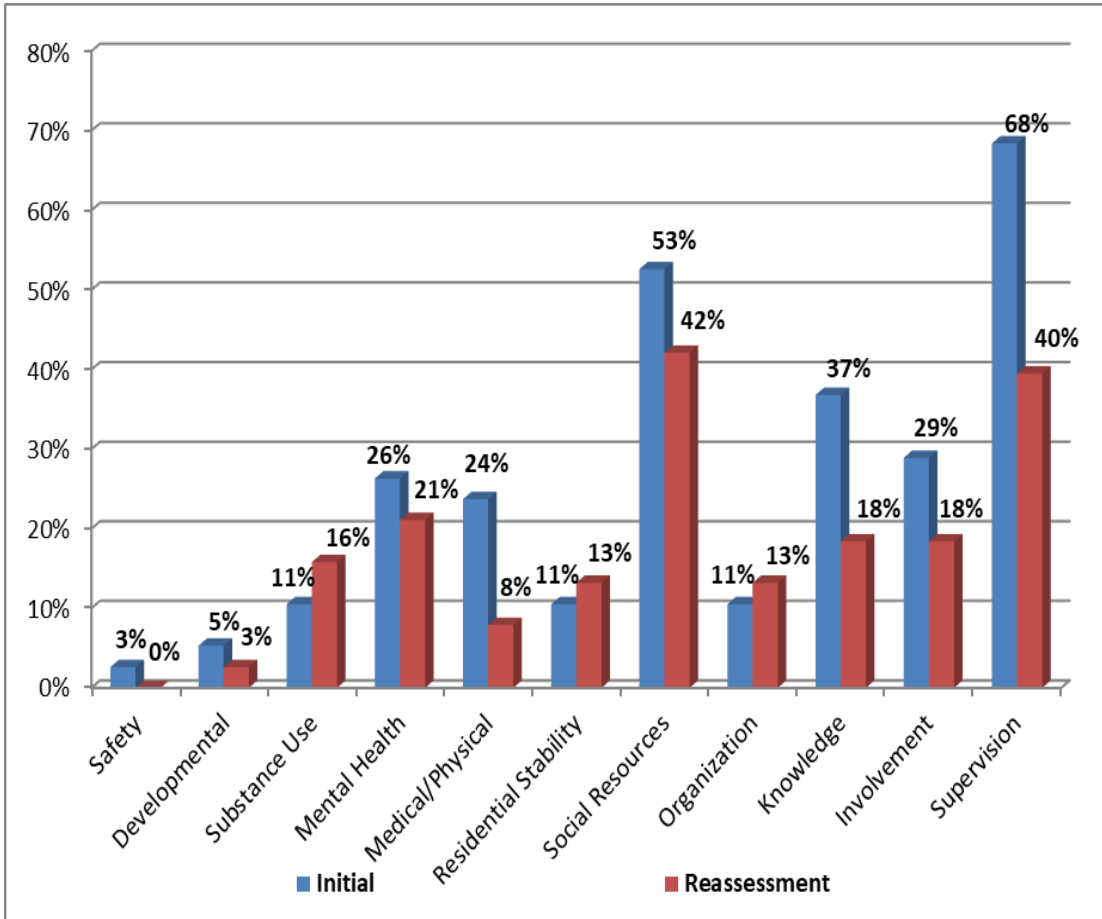
Essential Ingredients	Community Review Team	Truancy Review Team	High Fidelity Wraparound
Population	High Risk – Multi-system involved	Low Risk – Younger kids, Caregiver Focus	Families at risk of disruption; TAY
Focus	Family, Mental Health/Trauma & Legal	Education	Natural Supports, Family, Decision Making
Responsivity Issues	Involuntary, Motivation	Voluntary, Basic Needs	Youth Voice & Choice
Service Array	Intensive	Community/School Based	Complex, Creative, Intensive
Level of System Involvement	Intervention	Prevention/Early Intervention	Intervention - Voluntary
Collaboration	Caregivers; Multiple meetings weekly	Caregivers, Different staff; Every other week	Youth, MDT/Natural Supports Monthly meetings, Weekly team contacts

WRAPAROUND SHIFT CONTINUES

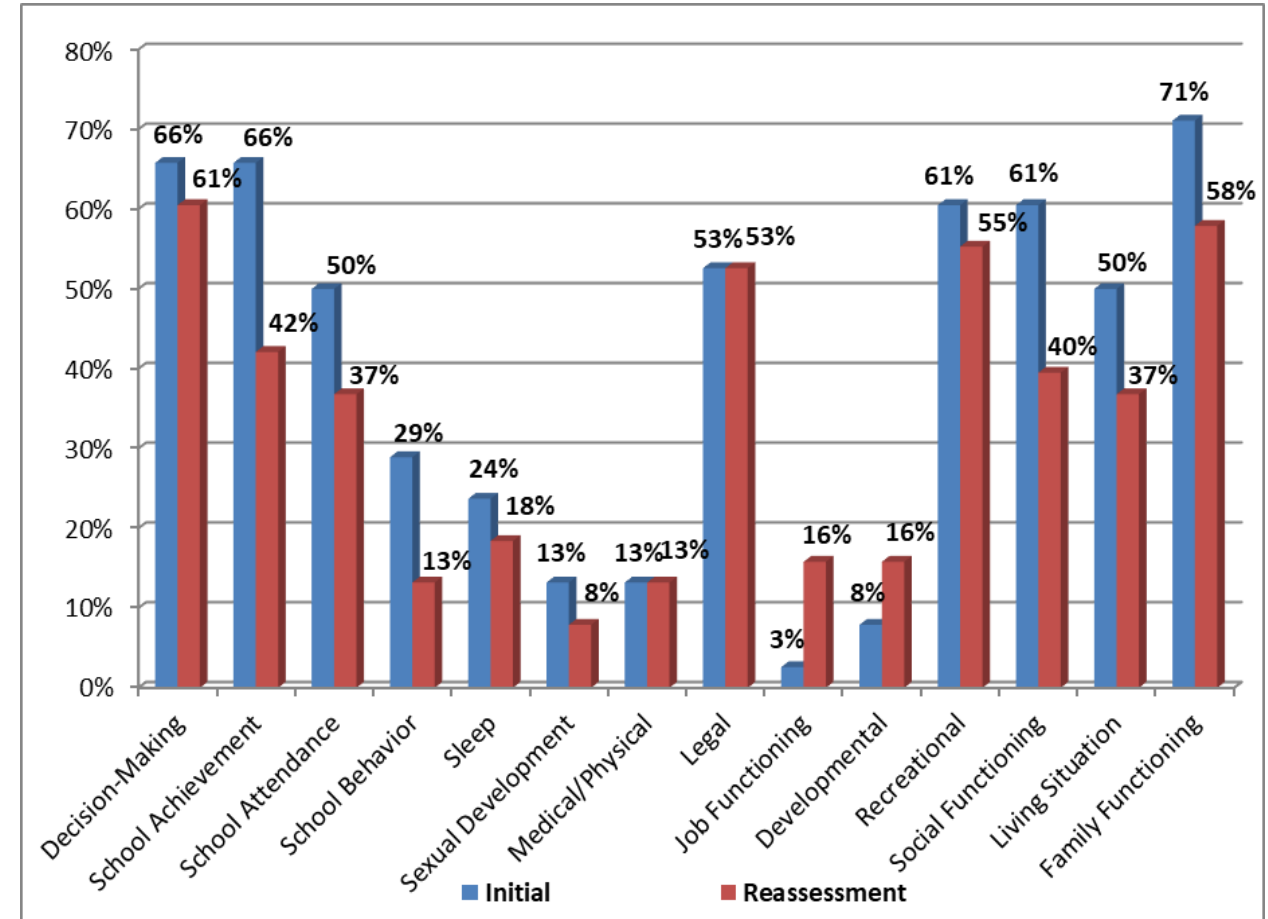
Centralized Utilization Management & High-Fidelity Wraparound

- Goal: Assess for, approve and oversee contracted services for Wraparound clients
 - Universal Care Coordination Review Form – CANS at every monthly meeting
 - Streamlined process to approve and monitor service delivery
 - Facilitation increases consistency and collaboration
 - In Vivo structured decision making process
 - Gather data at all levels

THE CROWD IS STILL CHEERING! RESULTS. WRAPAROUND DATA

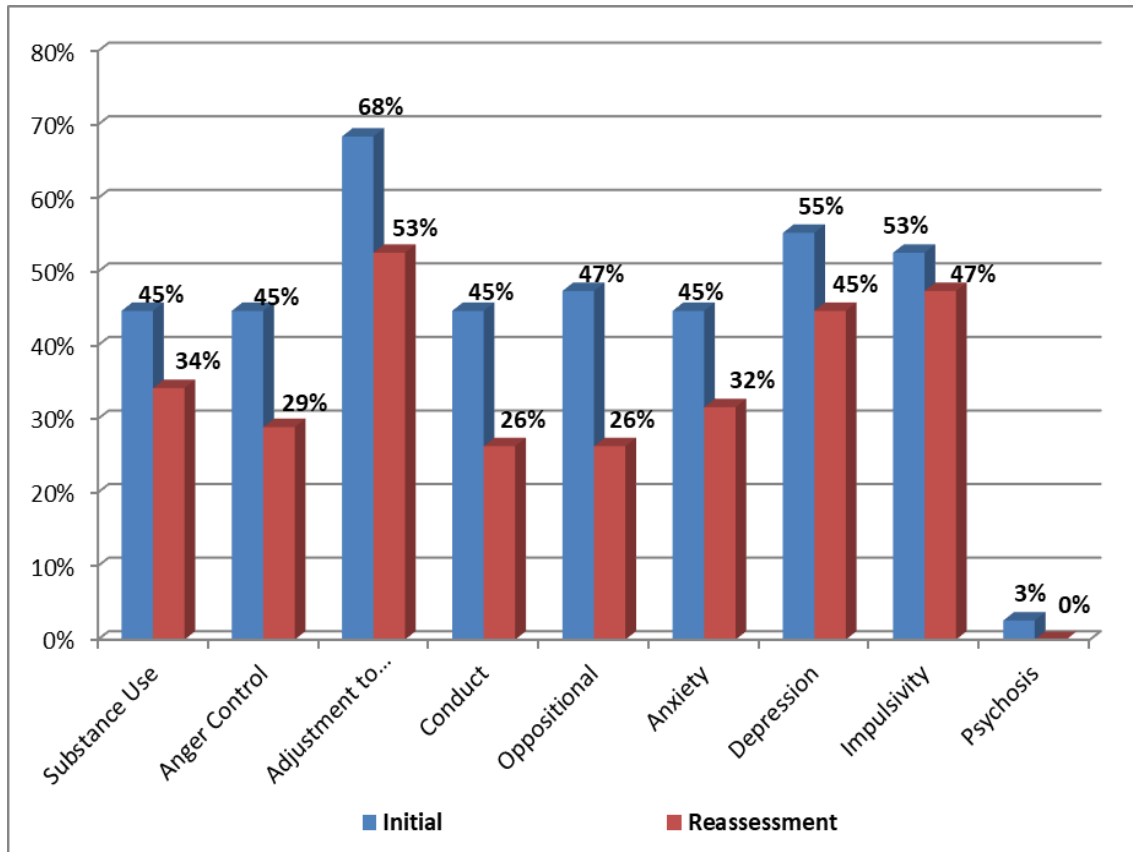


Caregiver Needs/Strengths

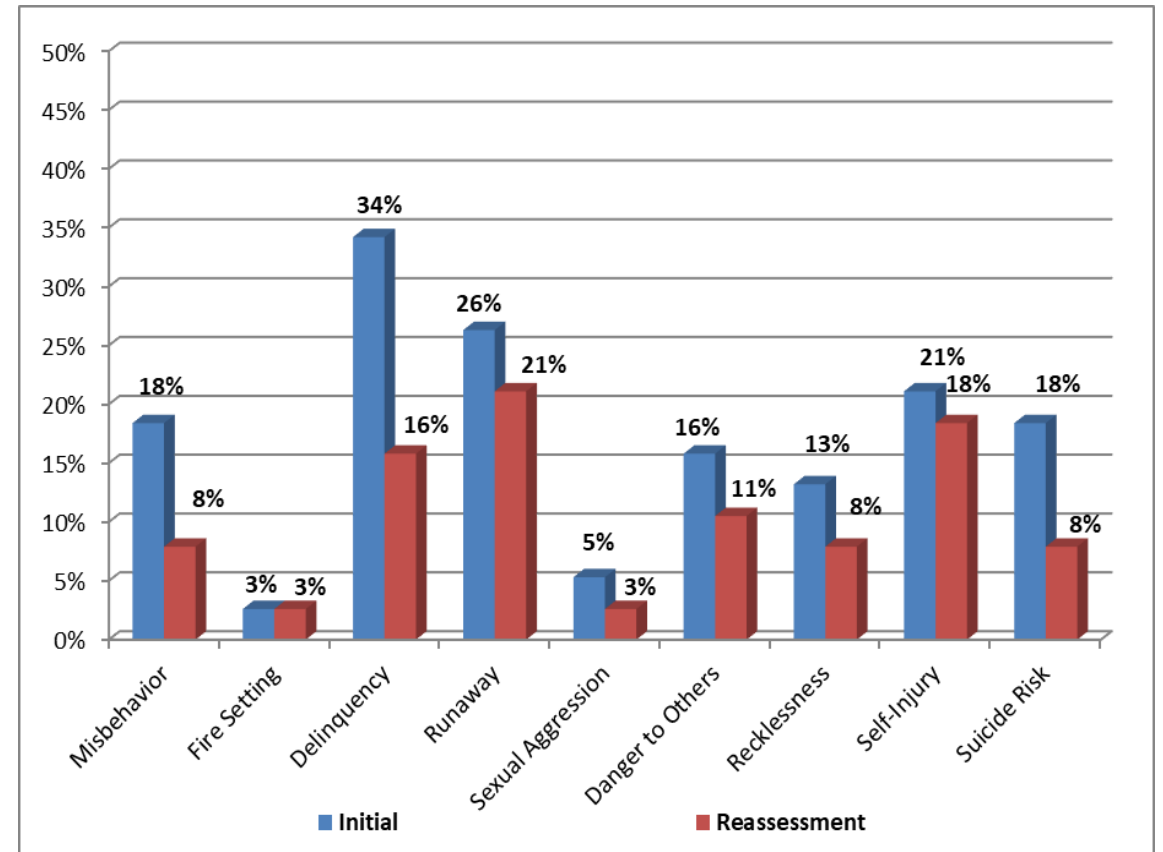


Youth Functioning Needs

WRAPAROUND DATA

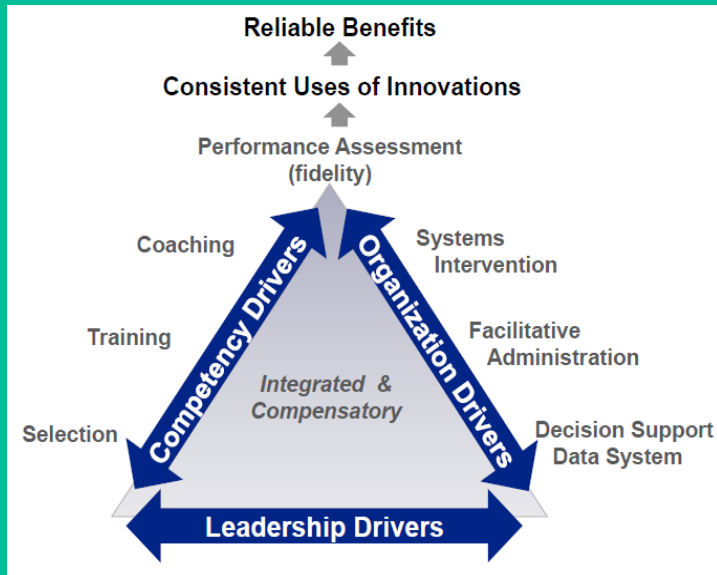


Youth Emotional/Behavioral Needs



Youth Risk Behavior Needs

THE WHAT & THE HOW



Replication: Core components that were adhered to consistently

- People
- Meeting
- Facilitator
- **Assessment**
- **Well-defined target population**
- **Service array**
- **Structured decision-making process**
- **Outcomes tracking**
- **Reassessment**

Adaptation: Factors that were tailored to population and program needs

- **Truancy**
 - Less intensive services/earlier intervention
 - Caregiver focus
 - Educational supports
- **High-Fidelity Wraparound**
 - Utilization management
 - Monitoring strengths and needs over time

Quality implementation framework: Infrastructure supporting the implementation process at the practitioner-, program-, and systems-levels

- Training/Coaching/Communities of Practice
- **Implementation Teams**
- Administrative Support
- Leadership and Ownership
- Data

TCOM: REPLICATION & ADAPTATION TO LINK PRACTICE, PROGRAMS AND SYSTEMS

Practice

- Articulated practice model with defined core components
- Intended outcomes
- Implementation supports

Programs

- Programs tailored to service intensity & specific risks/needs of target population
- Capacity
- Data monitoring

Systems

- Order of operations
- Up-front investment
- Policies *translated* to the practice level
- Alignment of systems outcomes, service array, and investments
- Policy-enabled practice

AGENDA

I. The Context

II. The Model

III. The Shift

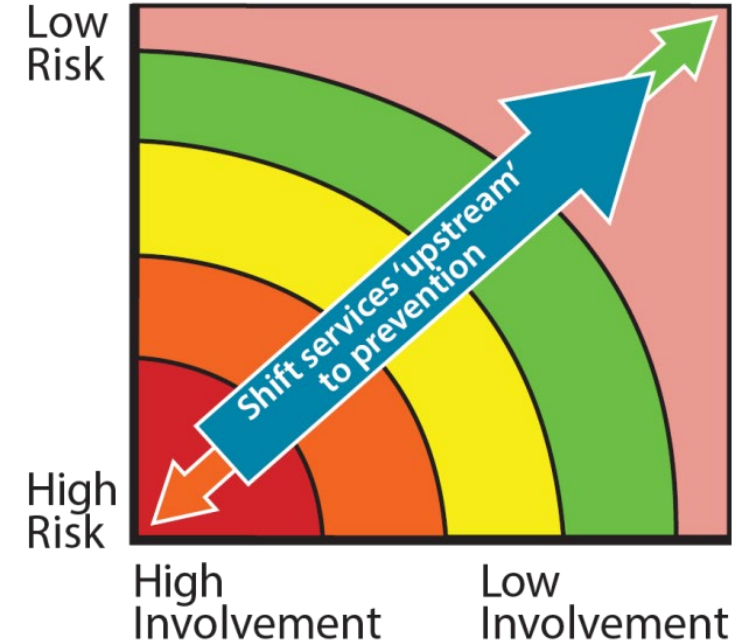
IV. The Results

V. **The Future**

THE FUTURE: OPPORTUNITIES FOR EXPANSION

Additional
populations/programs
who can benefit from
the practice model:

- Colorado Community Health Alliance (Medicaid)
- Collaborative Management Program
- COACT – System of Care
- Child Welfare
- Youth in Out-of-Home Placement
- School Districts
- Probation
- Diversion



QUESTIONS?

- Dave Bonaiuto, MA - Quality Assurance and Process Improvement Manager
 - dbonaiuto@bouldercounty.org
- Lane Volpe, Ph.D. - Manager of Strategic Implementation
 - lvolpe@bouldercounty.org
- Heather Lucien, LCSW – Utilization Management/Placement Supervisor, Trauma Care Coordinator
 - hlucien@bouldercounty.org
- Angie Dreier, MSW – Community Review Team and Assessment Coordinator
 - adreier@bouldercounty.org