

# Training Beyond CANS 101



**NYC**  
Administration for  
Children's Services

**ACS**

James  
Satterwhite  
Academy

---

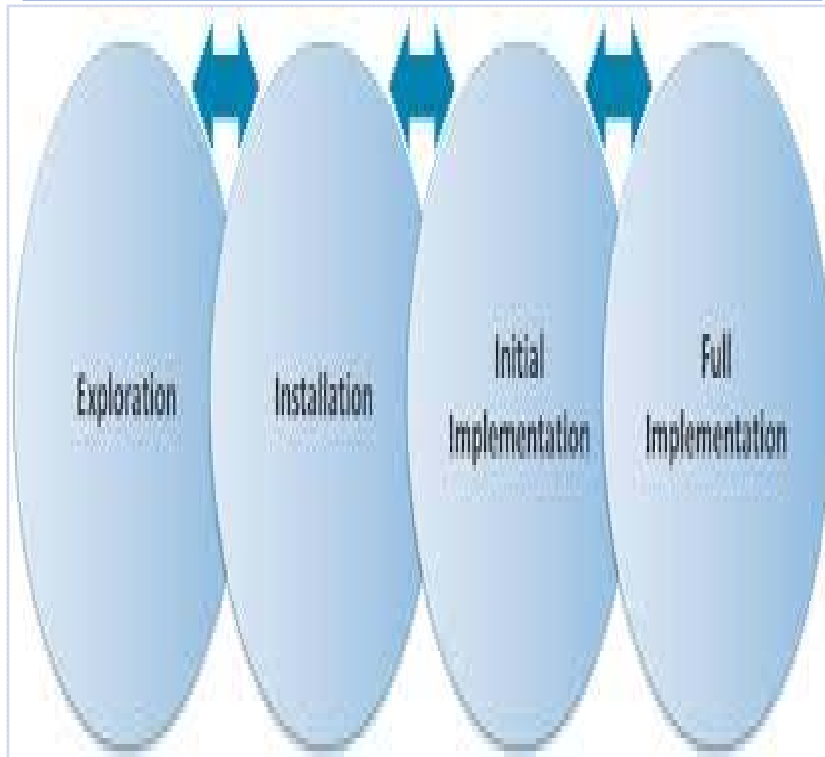
Workforce  
Institute

**Alexandra Bastien**

**Isaura Rodriguez**

# Objectives

Using implementation science to inform training development



Address stages of training development from pilot to roll-out



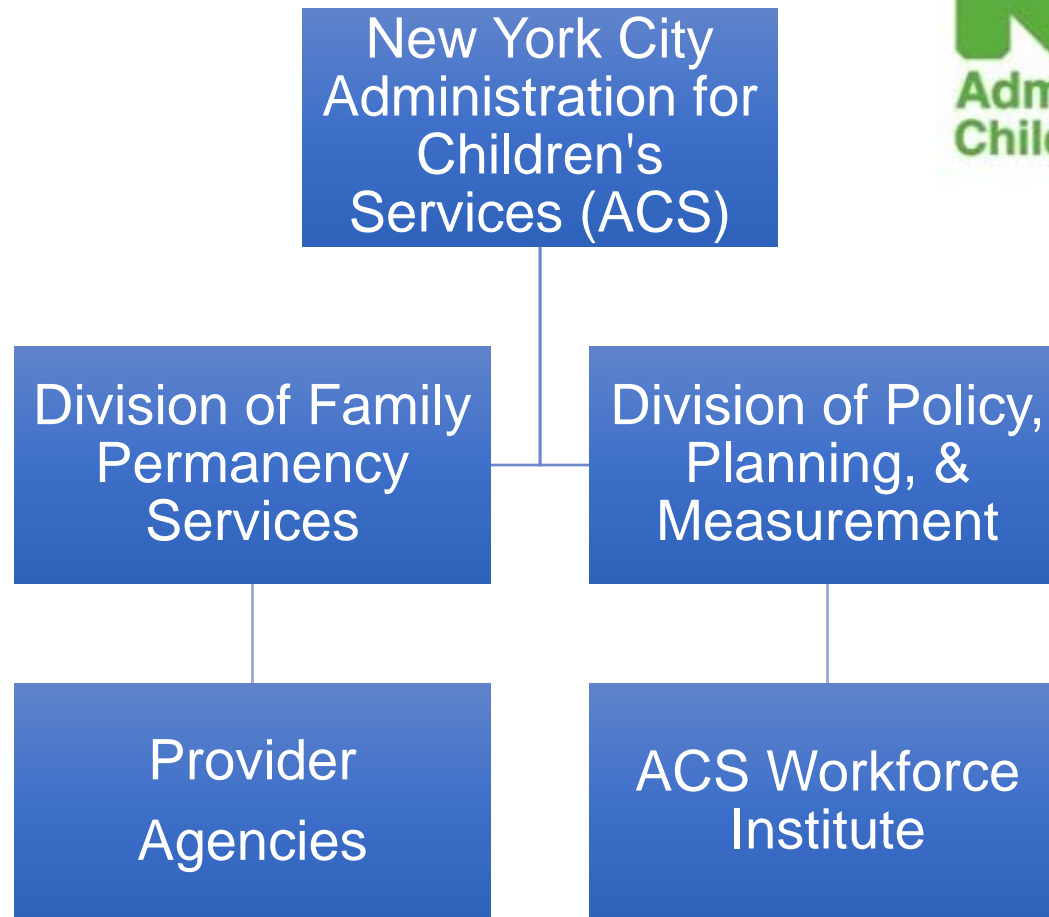
# New York City Administration for Children Services & the CANS

**NYC**  
Administration for  
Children's Services

**ACS**  
James Satterwhite  
Academy

**ACS**  
Workforce  
Institute

# Who is NYC ACS?



ACS  
James Satterwhite  
Academy

ACS  
Workforce  
Institute

# How is the CANS-NY Used at ACS?

## Title IV-E Foster Care Waiver Program

## Strong Families & Child Success NYC

- Comprehensive Trauma Screening
- Reducing Foster Care Caseloads and Increasing Supervision
- Strengthening Young Child-Parent Bonding
- Increasing Mental Health Clinician and Foster Care Worker Collaboration



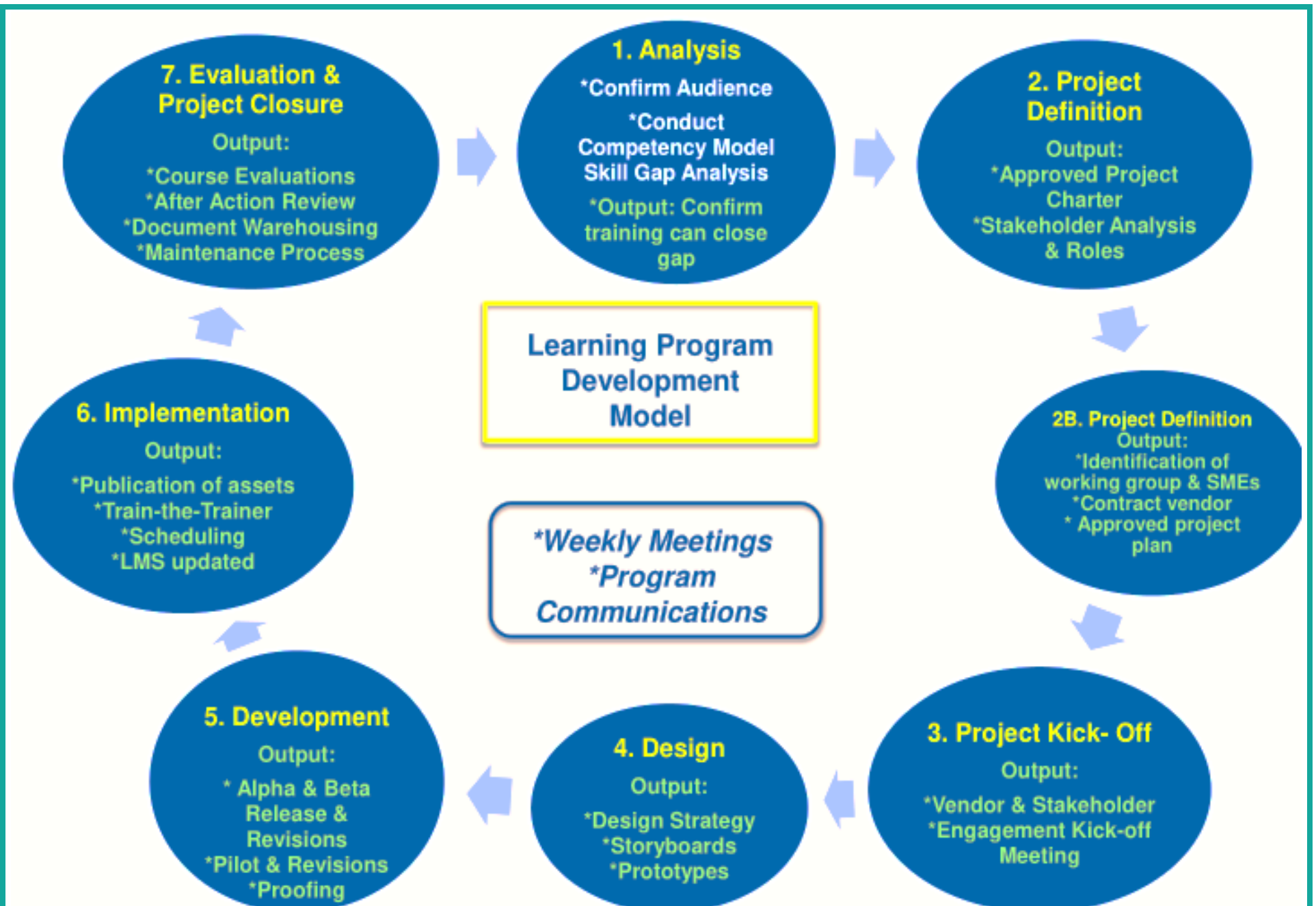
ACS  
James Satterwhite  
Academy

ACS  
Workforce  
Institute

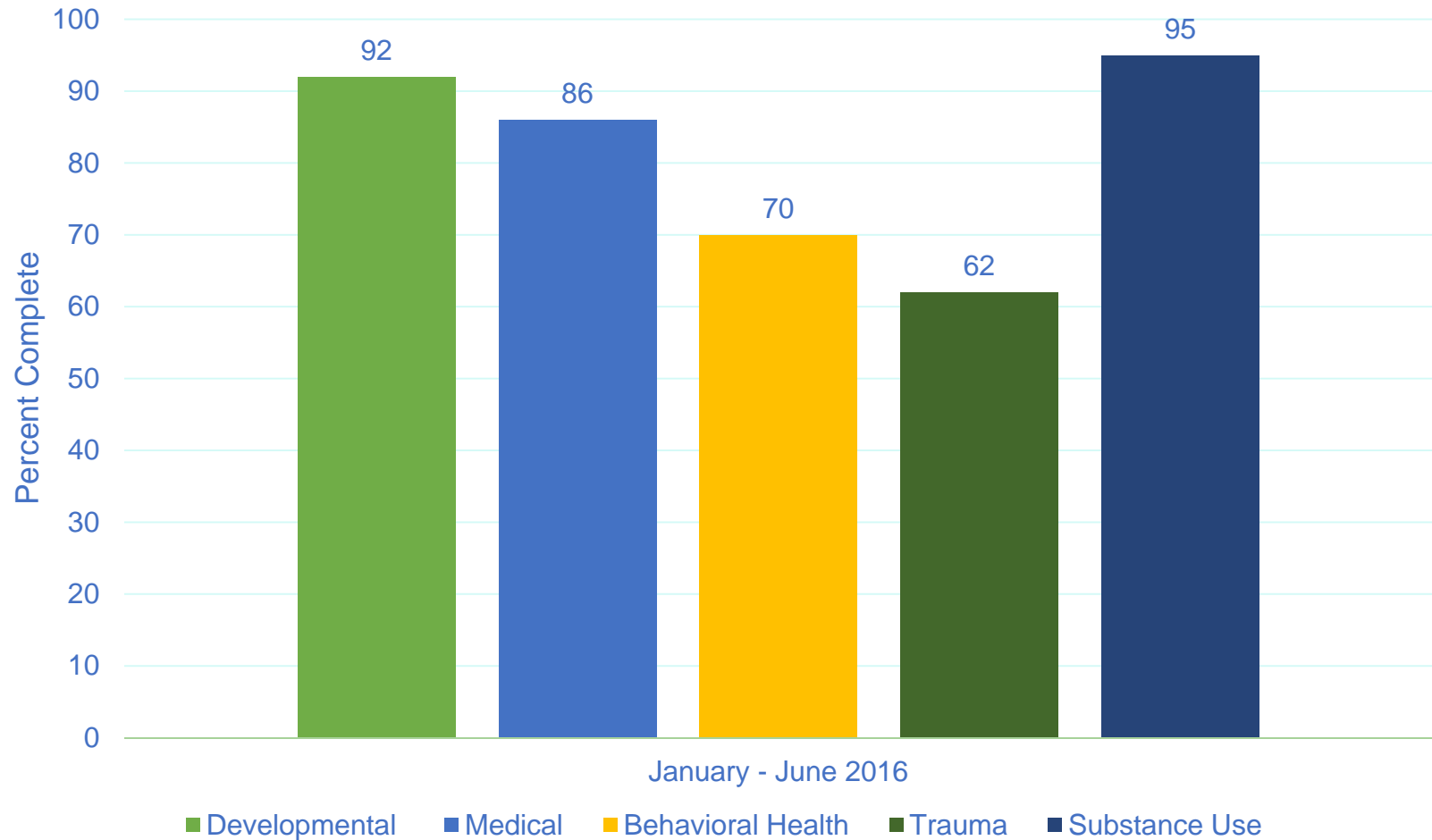
# CANS Implementation

- CANS-NY workgroup
- E-CANS
- CANS-NY trainings
  - Case planner
  - Supervisor
  - Super user
- Learning Collaboratives
- PfS Training/ PfS Refresher Training
- Monthly Implementation Meetings





# Determining Training Needs



■ Developmental ■ Medical ■ Behavioral Health ■ Trauma ■ Substance Use



ACS  
James Satterwhite  
Academy

ACS  
Workforce  
Institute



# CANS-NY Booster Training Trauma & Behavioral Health Modules

**NYC**  
Administration for  
Children's Services

**ACS**  
James Satterwhite  
Academy

**ACS**  
Workforce  
Institute

# Components of CANS-NY Trauma and Behavioral Health Training

- Symptom Matching Game
- Remembering Trauma Video
- Desk Guides
- Case Practice
- Referral and Treatments
- Vicarious and Secondary Trauma

# Activity: Trauma Symptoms Module Matching

This item is used to describe an individual who is having difficulties adjusting to a traumatic experience.

0-5 and 6-21	
A	Traumatic Grief
B	Re-Experiencing
C	Hyperarousal
D	Avoidance
E	Numbing
F	Dissociation
G	Affective/ Physiological Dysregulation



# Matching Game in Action!





**ACS**  
Workforce Institute  
Knowledge into Practice

# Vicarious and Secondary Trauma



**ACS**  
Workforce Institute

**CUNY School of  
Professional Studies**



# Training Outcomes



Administrators for  
Children's Services

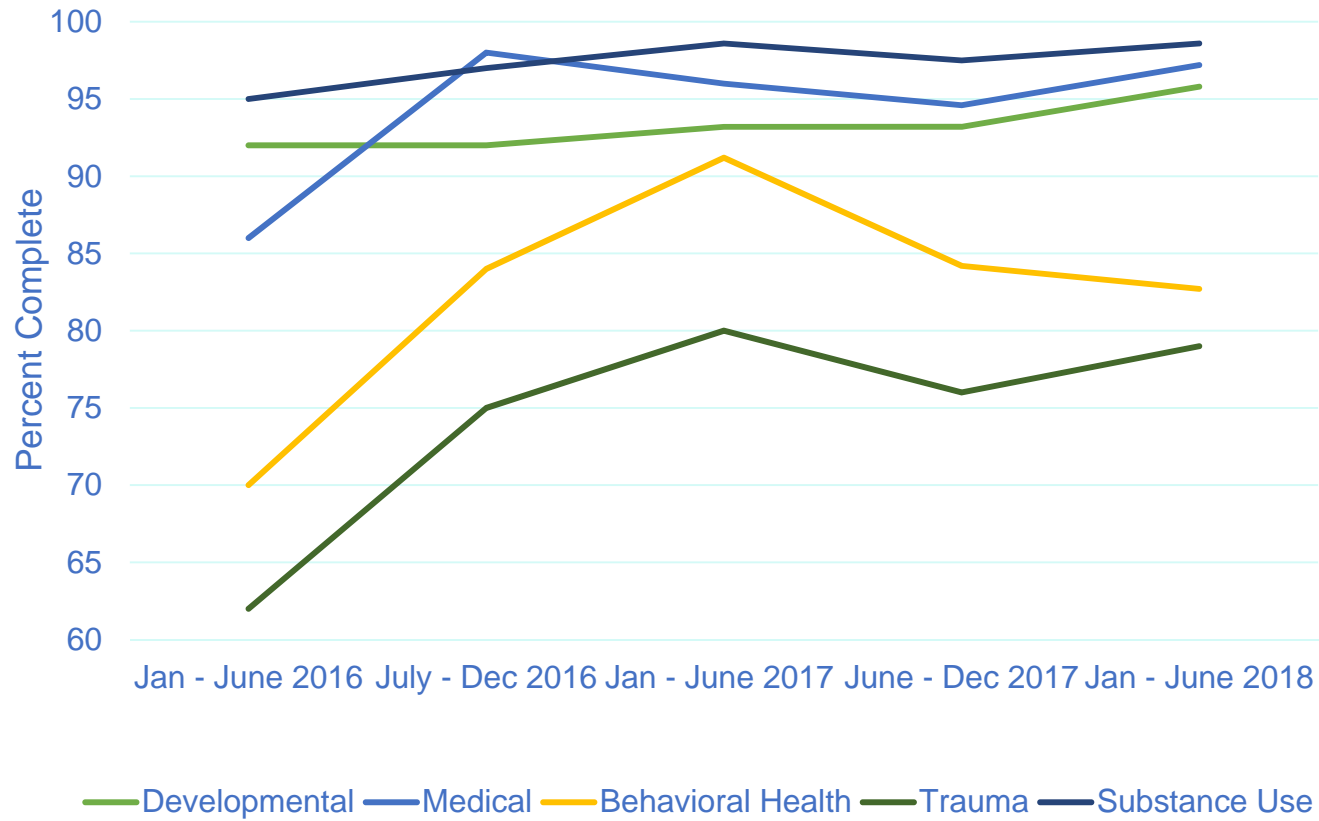
ACS

Workforce Institute

CUNY School of  
Professional Studies



# Training Outcomes



ACS  
James Satterwhite  
Academy

ACS  
Workforce  
Institute

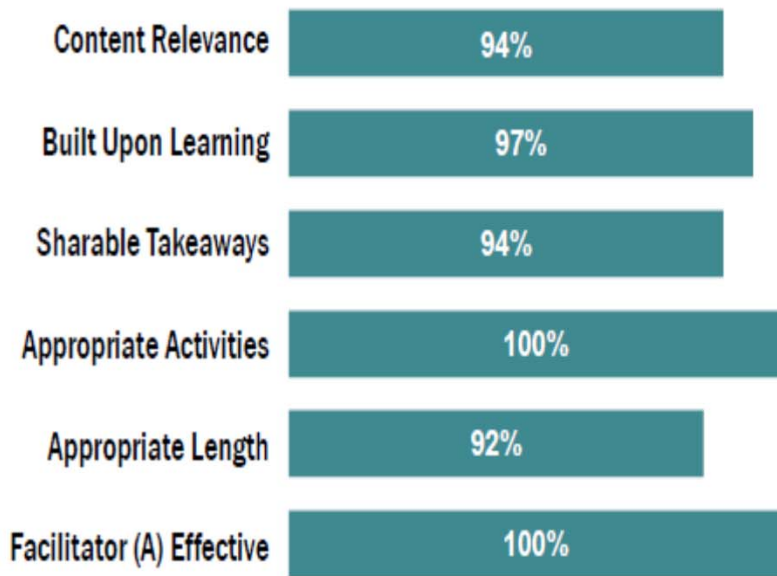
# CANS-NY Trauma Pilot Evaluation Dashboard

June 20, August 13, August 14, 2018 | Three Sessions

Level 1 Reactionnaire Data  
N = 36 Learners  
97% Response Rate

Level 2 Pre and Post Test Data  
N = 33 Paired Pre/Post Tests  
89% Response Rate

Total Attendance = 37 Learners



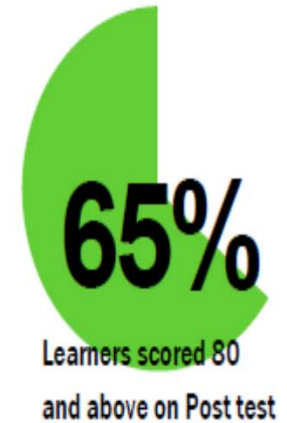
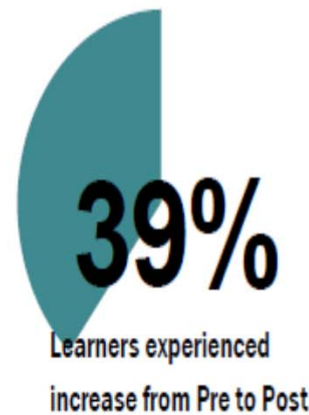
■ Strongly Agree / Agree

Average PRE Test Score (N=33)

76

Average POST Test Score (N=34)

81





# Feedback from Training

“Great way to refresh the type of trauma and symptoms in children.”

“[This training] will help when evaluating/screening the population we work with.”

“The most helpful information given in this training was the different types of symptoms and what [behavior they are] associated with.”

“Trainer was very knowledgeable and conveyed information in a relatable manner.”

The cheat sheet [was helpful.]”

“[It was helpful to have] a clear definition of trauma and how and it affects the children/families we work with.”



# Thank You!

Alexandra.Bastien@acs.nyc.gov

Isaura.Rodriguez@acs.nyc.gov

Alicia.Capobianco@acs.nyc.gov



**ACS**  
James Satterwhite  
Academy

**ACS**  
Workforce  
Institute

# Acknowledgements

**About the ACS Workforce Institute:**

The ACS Workforce Institute provides ongoing professional skills development of frontline staff and supervisors at ACS and its many partner agencies across the child welfare and juvenile justice sectors. Developed in 2016, the Institute is a partnership between ACS and the City University of New York (School of Professional Studies and the Hunter College Silberman School of Social Work).

**CUNY School of  
Professional Studies**



**Silberman**  
School of Social Work  

---

**HUNTER**



**ACS**  
James Satterwhite  
Academy

**ACS**  
Workforce  
Institute