

# CANS National Benchmarking: Louisiana Wraparound Drill Down

Joseph J. Shayka, MA; Wendy G. Bowlin, MS, LPC, MBA; Barbara A. Dunn, LCSW, ACSW

Magellan Health of Louisiana, Magellan HealthCare



## Introduction

In 2016, Magellan of Louisiana Coordinated System of Care (LA CSoC) entered into a data sharing agreement with the Wraparound Evaluation Research Team for the National CANS Benchmarking Project for Wraparound Youth. The Louisiana Child and Adolescent Needs and Strengths (LA-CANS Comprehensive) items for youth from 2013 to 2016 eventually were submitted. Common core items in the data set were used to determine average and interquartile profiles and change scores at 6 months using the count of actionable needs. Louisiana's average youth scored 10 actionable needs of 32 core (interquartile: 8-12 needs) with a median one point change at 6 months. The average youth additionally had one newly identified need at 6 months. A replication of the WERT study design using the entire LA CANS would refine the findings.

## Questions

1. How does using the entire LA CANS change the profile of youth needs?
2. How do 6 month change scores look?
3. How do change scores look at discharge?
4. How many newly identified needs are resolved by discharge?

## Methods

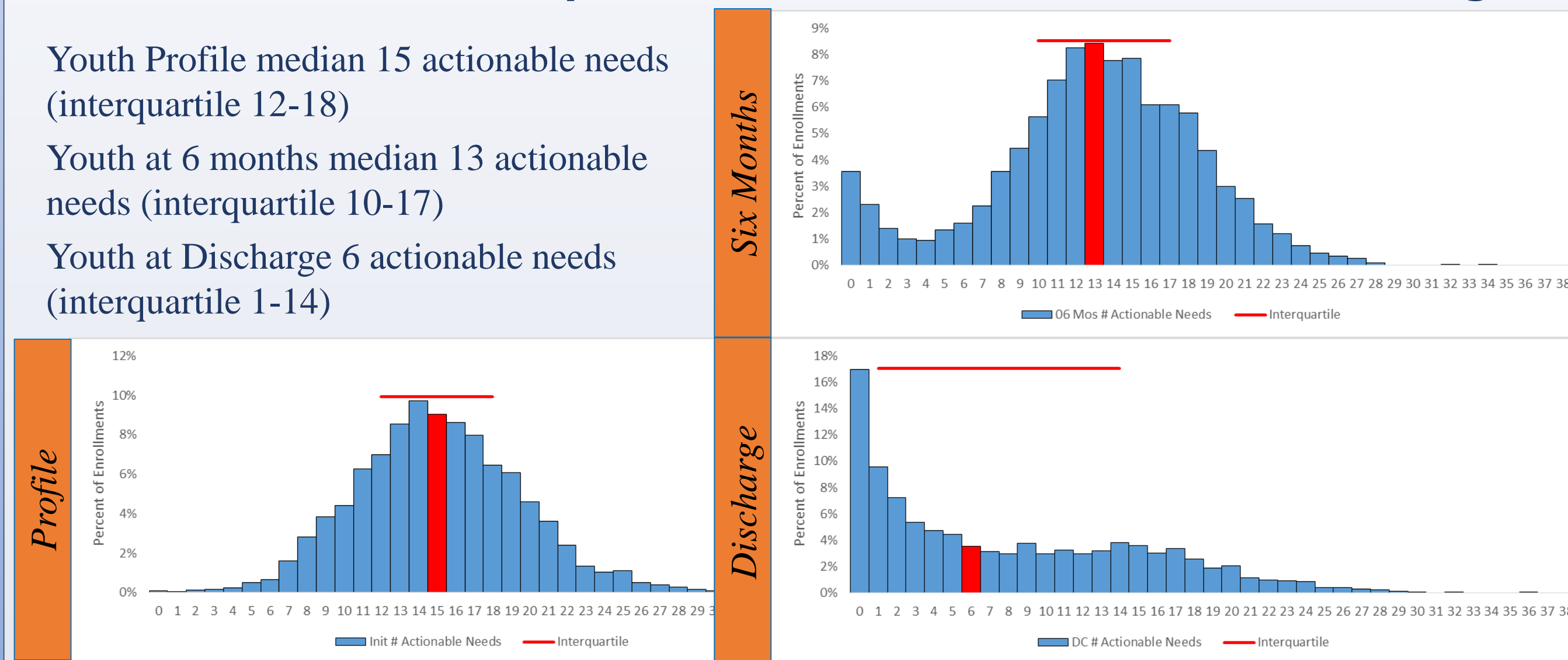
1. Samples consist of full CSoC enrollment CANS entered since Nov 20, 2014.
2. CANS data are selected based on assessments dates.
3. Initial CANS is the last CANS within 30 days of the referral date.
4. Discharge CANS is the last CANS +/- 30 days of the discharge date.
5. Actionable Needs are defined as a 2 or 3 on a CANS item.

## Distribution of Youth by # of Actionable Needs 6 mos and Discharge

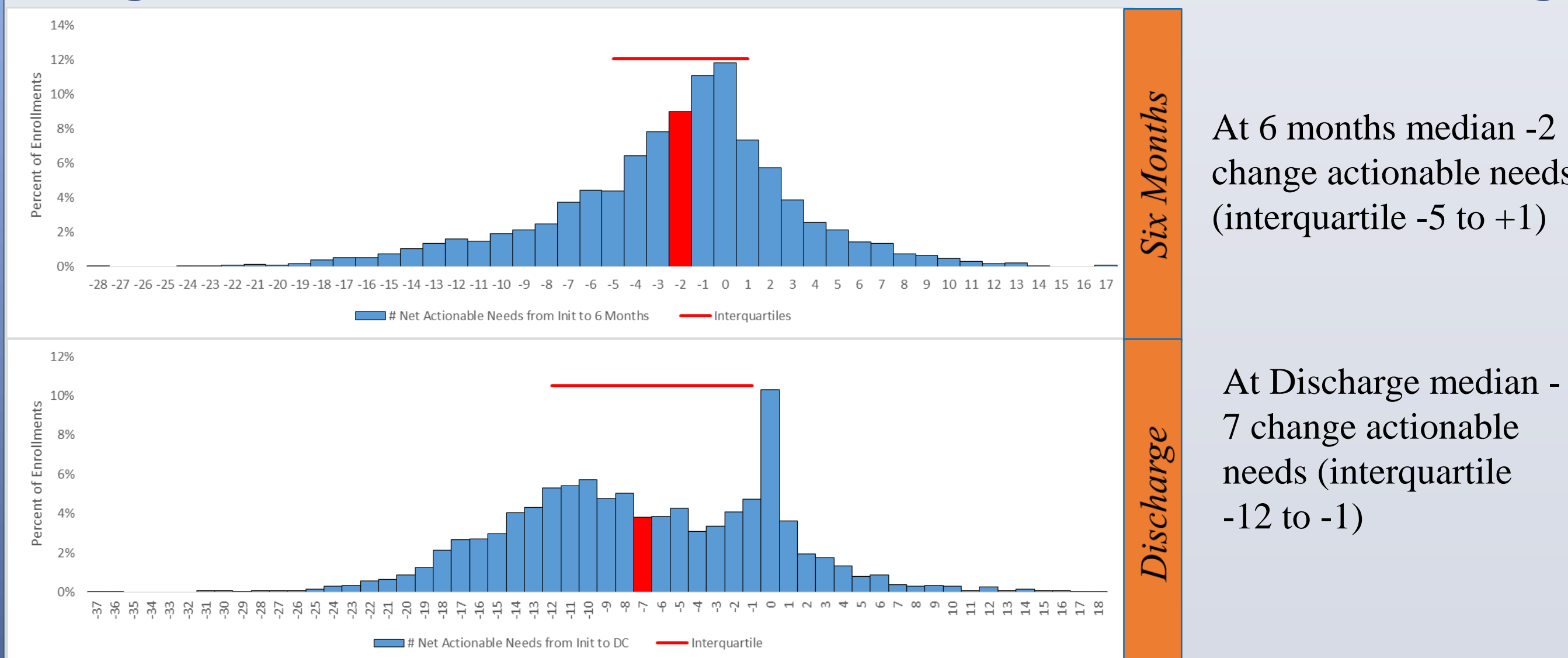
Youth Profile median 15 actionable needs (interquartile 12-18)

Youth at 6 months median 13 actionable needs (interquartile 10-17)

Youth at Discharge 6 actionable needs (interquartile 1-14)



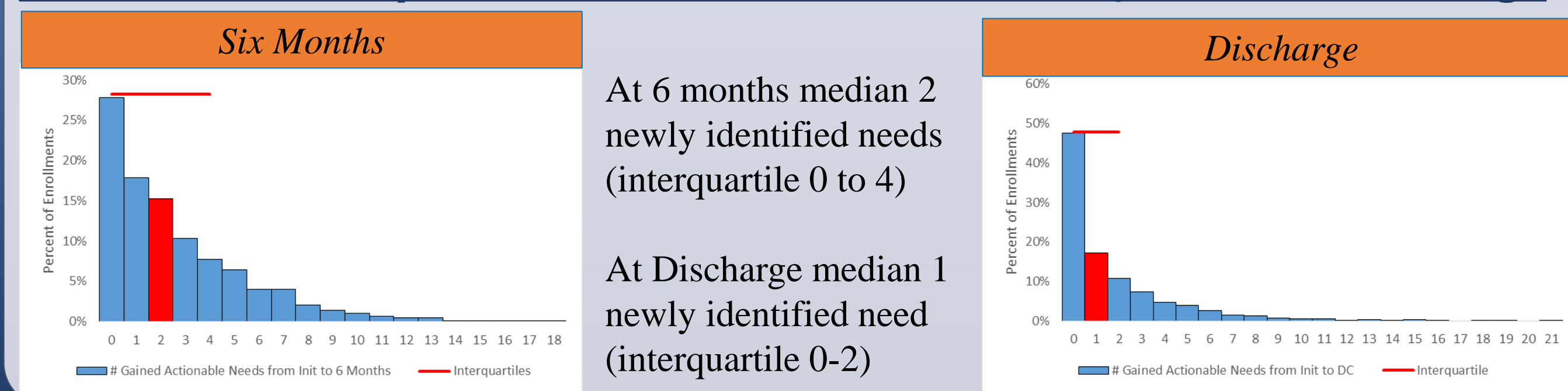
## Change in # of Actionable Needs from Initial to 6 mos, Initial to Discharge



At 6 months median -2 change actionable needs (interquartile -5 to +1)

At Discharge median -7 change actionable needs (interquartile -12 to -1)

## Results # of Newly Identified Needs Initial to 6 mos, Initial to Discharge



At 6 months median 2 newly identified needs (interquartile 0 to 4)

At Discharge median 1 newly identified need (interquartile 0-2)

## Conclusions

Using an expanded data set (through August 2017) and the full LA CANS tool (53 needs) the median youth profile of 15 actionable needs was 5 greater than the WERT common item set. Change at 6 months was -2 actionable needs, yet the full outcomes at discharge were -7 actionable needs. The change at 6 months under identifies the potential change by time of discharge. Newly identified needs at 6 months was a median of 2, or one more than the WERT's common item set although over a quarter of youth had no Newly Identified Need. By Discharge, the median newly identified (and not resolved) was one, although almost half had none. Fewer newly identified needs by discharge is less concerning.

## References

- CANS Replication Study of National Benchmarking.* Shayka, J. Unpublished. August, 2017
- Comparison of Louisiana to a National Sample of Large Wraparound Programs on a Core Set of CANS item.* Hensley, S. April, 2017
- Learning from CANS to Inform Wraparound Initiatives: Discoveries and Challenges.* Coldiron, J.S., Hensley, S., Parigoris, R., Bruns, E.J. TCOM Conference Plenary. Princeton, NJ. November 18, 2016
- Using administrative CANS data for benchmarking and outcomes monitoring in state-wide Wraparound initiatives.* Bruns, E. J., Coldiron, J.S., Hensley, S. Annual Research & Policy Conference on Child, Adolescent, and Young Adult Behavioral Health. Tampa, FL. March 14, 2016

## Contact Information

WGBowlin@MagellanHealth.com  
 JJShayka@MagellanHealth.com  
 BADunn@MagellanHealth.com